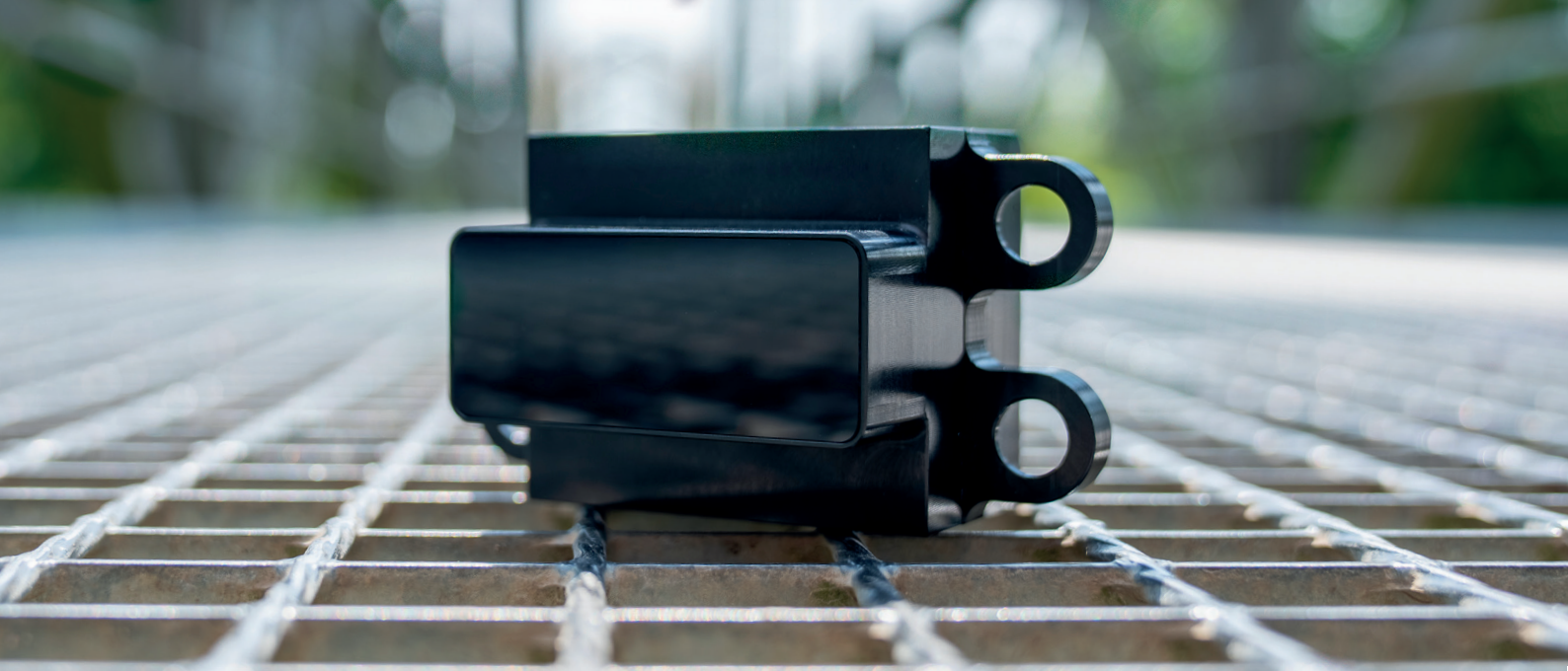


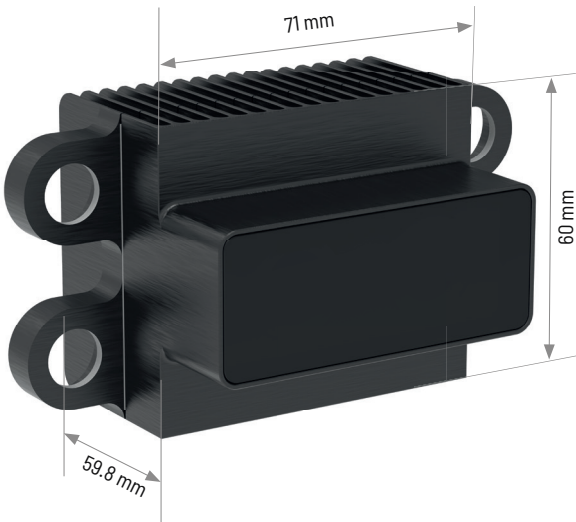
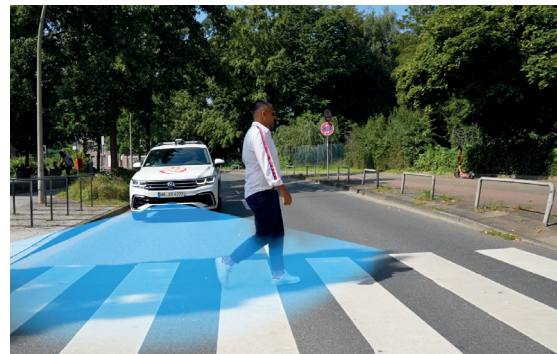
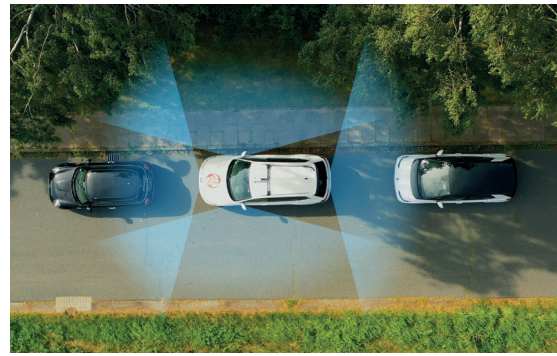
# MOVIA™ S

Proven lidar performance in a smaller and lighter design for short-range automotive applications



## Key Features

- ▶ Small housing and wide field of view
- ▶ Developed to automotive-grade standards
- ▶ Solid-state solution
- ▶ Robust and reliable: no moving parts
- ▶ Transceiver resolution of 128 columns x 80 rows
- ▶ Sequential flash scanning captures environment hundreds of times, row by row
- ▶ Adverse weather performance due to multi-echo capability
- ▶ Easy integration into design-critical components such as bumpers thanks to small optical window

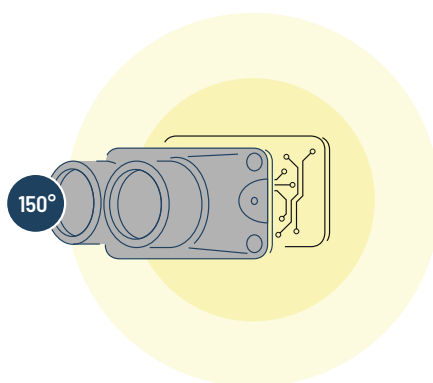


Safe mobility at the speed of life®

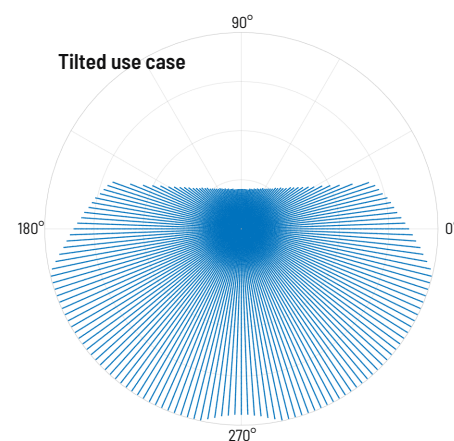
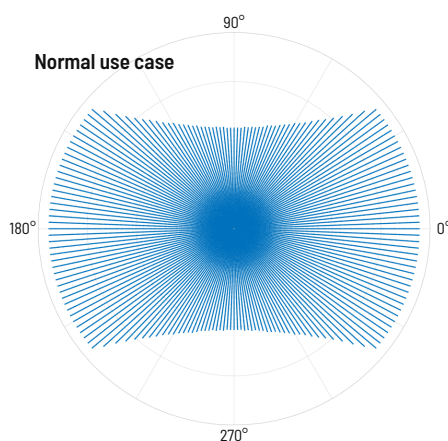


## Field of View

MOVIA™ S features a 150 degree optic, allowing a very wide field of view to advance autonomous driving in urban scenarios.



Depending on the use case, MOVIA™ S allows to tilt the vertical field of view in the range of  $\pm 22^\circ$  without changing the tilt of the sensor.



## Technical Data

Technology / Laser / Optical	MOVIA™ S (150°)
Max. field of view (h x v)	150° x 81°
Max. angular resolution (h x v)	0.95° x 0.76°
Design range	45 m

## Technology & Innovation



No moving parts



4D Output:  
Point cloud & intensity image



Variable scan frequency



High resolution



Protected from environmental influences



Class 1 laser product



Low power consumption



Compact design